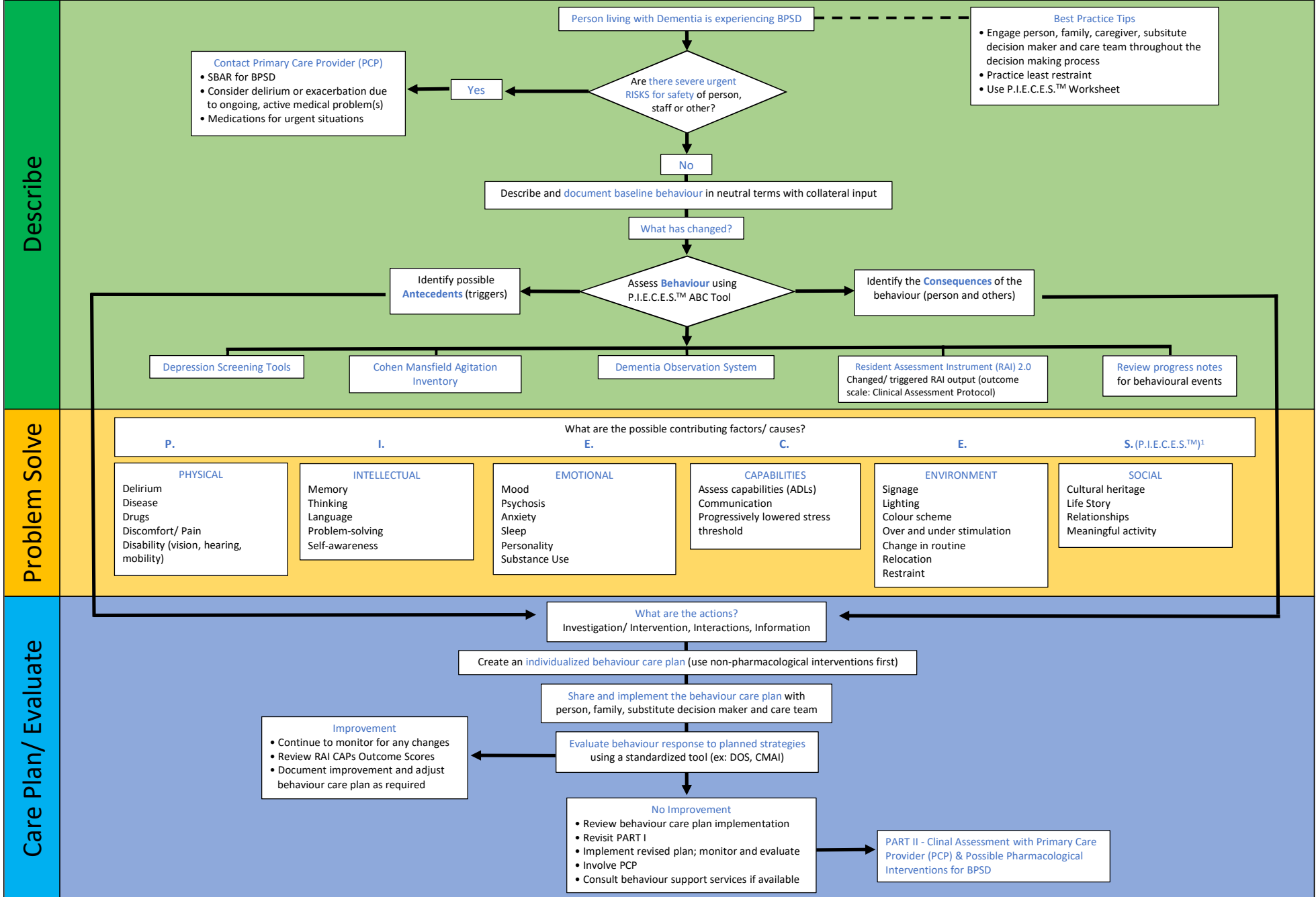


PART 1 - Team Decisional and Practice Support for BPSD



**Best Practice Tips**

- Engage person, family, caregiver, substitute decision maker and care team throughout the decision making process
- Practice least restraint
- Use P.I.E.C.E.S.™ Worksheet

**Contact Primary Care Provider (PCP)**

- SBAR for BPSD
- Consider delirium or exacerbation due to ongoing, active medical problem(s)
- Medications for urgent situations

Describe

Problem Solve

Care Plan/ Evaluate

<sup>1</sup> P.I.E.C.E.S.™ Consult Group (2008). Putting the P.I.E.C.E.S.™ Together: A Model for Collaborative Care and Changing Practice 6th Edition(R) Canada. With acknowledgement of the authors.

PART II - Clinical Assessment with Primary Care Provider (PCP) & Possible Pharmacological Interventions for BPSD

